



Published Monthly. at St. Michaels. Fort Totten. P. O. N. Dakota.

ENTERED AS SECOND CLASS MATTER AT THE POST-OFFICE AT FORT TOTTEN, N. DAK.

WOAHTANI TOKAHEYA.

ORIGINAL SIN.

From "Instructions of the Commandments of God and the Sacraments of the Church. St. Alphonsus Liguori,

Wicašta woecon hduectu kte kin he ihanke kin ekta token wocante wašte yuhe kta hecinhan he sdonkiye kta iyececa. Wicašta oihanke tawa kin he nion kin den econhan Wakantanka waštedake kte, qa ohoda kte qa iye kin on wiconi unman kin en owihanke wanin kici iyuškin kta. Hecen Wakantanka maka akan wuwijice, wokinihan, woimagaga onkodepi kta on onqunkiyapi šni, tuka taku econ onšipi kin hena anaungoptanpi kta, qa hena anaungoptanpi kinhan marpiya wowašte owihanke wanice kin he ohiunyanpi kta.

De on etanhan Itancan kin Adam wicašta tokaheya kin kaga, qa Eve tawicu kta e qu, qa hetanhan wicašta kin icagapi. Wowašte tawa kin ohnayan wicakaga, qa makatamarpiya kin en ewicahnaka, qa hetanhan marpiya ekta awicayapi qa owihanke wanin woiyokipi kin en iyuškinpi kta iwahowicayapi. Maka akan onpi kin econhan maga wowiyuškin kin en waskuyeca owasin woyuteyapi kta e wicaqu; tuka, waanagoptanpi kta hecinhan iwicayute kta on, can wanjina rcin en ewicakipazo qa he etanhan yute šni wicaši. Tuka Adam qa Eve Wakantanka anaungoptanpi šni, qa waskuyeca terinda kin etanhan yutapi, qa woartani kin de on wowašte wakan

kin wicakipi, wacahnana maga wašte kin etanhan tokan iyewicayapi, qa Itancan wakan kin itkokipapi iyecece kin on wicoicage tawapi owasin maka akan šica yacopi, qa wiconę owihanke wanica ko wicahiyahde. Decen marpiya tiyopa kin iyepi qa sanpa wicoicage tawapi owasin en yapi kte šni on natakapi.

De woartani tokaheya kin ee, ateunyanpi wawitkokipa iyecen, wocanniye cinca owasin en untonpi, qa Wakantanka tokaunyanpi.

Church waonspekiye kin ohnayan Mary witanšna on wakan kin he woaltani tokaheya kin he etanhan icašote šni. Woaltani wiciye econpi kin nakun etanhan icašote šni kin he wowicake. He Church wowicadaya Trent en yušanpi qa yaotaninpi. Tuka onmanpi owasin Adam toaltani kin ikoyakapi, wowicake owihanke wanice kin sdononyanpi kte šni on iyopeonyanpi, qa taku šice kin e etkiya awaoncini.

Tuka miniaonkaštanpi en Jesus Wanikiya towašte kin on wowašte wakan kin onkicupi, qa onkakijapi on woasni. Hecen Wakantanka cinca, qa mahpiya kin tawa kte onhiyupi, miniaonkaštanpi en wowašte onqupi kin he tohanyan ončapi šni hehanyan zaniyan onhduhapi kinhan. Tuka woaltani tanka on toki elipeonkiyapi kinhan wakansica ti en onyanpi kta onyacopi kta, tuka woaltani ohdakapi wowakan kin on woaktonje onkicupi onkokihipi.

2. WOAHTANI UNKIYE ECONQUNPI KIN.

AC.UAL SIN.

Woartani onkiye econqunpi kin he tanka, qa cistina kin hena icitokeca.

I. Woartani tanka kin he taku hecinhan sdonyepica, nagi kin wiconi tancan kin qu kin iyecen, Wakantanka towašte kin wicanagi kin wiconi qu. Hecen wicatanan kin nagi wanica eca ta qa wicarapi en ayapi kta eceena kipi, he iyecen woartani on wicangi kin Wakantanka towašte etanhan ta, hecen wakanšica ti en rapi kta. Woartani tanka kin hena 'on ta' eciyapi, ecin on nagi kin kte. "Wicanagi wartani kinhan, hee te kta" Ezekiel xviii 20. Wicanagi kin wakanšica ti en ye kta yacopi. Tuka wakanšica ti eyapi kin he taku kapi he? Tona woartani tanka yuha tapi kin hena hen owihanke wanin kakijapi kta wan heca. "Ukan čena owihanke wanin wokakije kin en yapi kta." Matt. xxv. 46.

Tuka taku wokakije ka e wakanšica ti kin en on kakijapi kta he? Wokakije ocaje owasin on; tona šica wicayacopi kin hena peta idešaša tanka kin ehan wokakije ocaje owasin on kakišwicayapi kta, wacinibošakapi tanka kta, qa owihanke wanin elipewicayapi kta.

Woaltani tanka wanjina on wicanagi wan owihanke wanin kakišyepica he? Tuwe decen eye kinhan he woaltani on tapi eyapi kin he taku kapi okalnige šni. Woaltani tanka eyapi kin he Wakantanka etanhan tokan nihduhomni, heon etanhan Wakan-

tanka walitanisa kin hewicakiye: "Niye ihpemayaya, hekta itoheya mayani" Jer xv. 6. Woaltani tanka kin he woyašice Wakan-tanka on ilaha qupi wan heca. "Cinca icarwicawakiye qa tanka wicawakaga, unkan makipajinpi." Isa. i.2. Taku wakan ištenyapi. "Woope kicaksapi kin on Wakantanka ištenyapi." Roma ii:23. Wakantanka deciyapi: anacigoptan kte šni. "Canapinpi mitawa duksaksa..... wawakipajin kte šni ce eha." Jer. ii:20.

De woartani tanka eyapi kin ee; qa on wakanšica ti wanjina kipi kte šni, tuka opawinge is kektopawinge kin hee kaeš woartani tanka wanjina on kakišyapi kte kin nakun iyenakeca šni. Wicašta wan wicašta ikceka wan oyazanye kinhan he kakišyepica; tuka wicašta okinihan wan, is wicaštayatapi wan hecakicon kinhan sanpa eacakiconpica, tuka hena owasin, qa marpiya en owotanpidan kin ko Wakantanka en itokam takupi he? Takupina šni kin iyececa. "Ixcewicašta iyurpa takupi šni; qa hena taku wanica qa taku šni hdawa." Isa. xl. 17. Hecen tuwe Wakantanka wašteundakapi on te qun tuwe irara kinhan token woiyopeye qupica he?

Hecašta, woartani tanka kin on taku yamni kta e sdonayapi kta: Tawacin ocowasin on, awicakehan iyowinyan, qa wicoran kin woiyokišica. De wanji rcin en ope šni kinhan he woartani tanka heca šni, cistina kin heca, qa is eca woartani heca šni.

II. Woaltani cistina kin wica-

ŚINASAPA WOCEKIYE TAEYANPAHA.

REV. JEROME HUNT, O. S. B.

PUBLISHER and PROPRIETOR.

FORT TOTTEN, NORTH DAKOTA.

With the Approbation and
Blessing of Rt. Rev. John Sharley
D. D. Bishop of Fargo, N. Dakota.

MAY, 15, 1908.

nagi kte śni tuka kionniyan. Wo-
iyokiśice oħanyanpi kin heca śni,
tuka hecašta Wakantanka ikipa-
pajinyan waeconpi wan heca.
Wicanagi on te kta wicoħan tan-
ka heca śni, wicoħan owasin ki-
tanna isanpa. Itonpi śni wan,
woyaśice akiktonśpica wan, he e
kaeś maka akan taku wokakije
hiyeye kin he isanpa śica.

Woartani cistina apa sdonya-
han econpi qa apa is sdonye śni
econpi.

1. Woartani cistina econpi
kte rea econpi śni, hena nina rea
Wicabapica śni. Witanśnaon
wakan kin heceena owasin etan-
han icupi.

2. Woartani cistina apa econ-
pi kte rein econpi heca qa hena
wicoran śica heca, iyotan econpi
kta iyokipipi kinhan; wawakipa-
jĩnpi, taku hececa woawacin yu-
hapi hecekceca hena kapi.

TO THE CHRISTIAN YOUNG MEN AND WOMEN.

Ito mitakuyepi, tona christian
kośkalaka na inś wikośkalaka
yaonpi kin wicoie wanji ptelyela
caje ciciyatapi wacin. Unkan ito,
tona christian henicapi na nahan-
rei tanśna yaonpi na okolakiciye
wakan tokel niħiconzapi na he
iyecel wocekiye wašteyalakapi
na taku owasin tanyan skaya na
owotanla awanniħiklakapi kin he
tohonweni aluśtanpi kte śni na-
han sanpa onspeniħiciyapi kta
wašte ke lo. Onkan akatanhan
nitancanpi kin el tanyan skaya
ahoniħipapi na hayapi tekteca
kolakapi na taku owasin yupiye
rei owanyag wašteya nikluhapi
kte kin on taku tona okolakiciye
wakan kin etanhan oniciyakapi
na yawašte na el śkan niśipi kin
hena anayagoptanpi na el katin-
yeya ištece śniyan inś ceħonkla-
śniyan yuonihanyan el yaśkanpi
kin on akatanhan nitancanpi kin
el yupiye rei nikluzapi qon he

nakun iyecel mahetanhan nina-
gipi kin skaya, owanyagwašteya
luhapi kte kin he iyotan wo-
yašte tanka rce kin he e. Unkan
taku tona on maka akanl ni yaon
kin el woyawašte yakamna kte
kin he wicaśa owasin cante wica-
yakiyin na wicoie wašte ecela na-
ronwicayayin kte. Christian he-
nica hecinhan niye el tokel awa-
niħicin qon he iyecel tuwe kaśaś
owasin cante yakluzin kte. On-
kan wicotawacin kin lena tukte
tanhan onnispe kte kin he wowa-
pi wakan he el tuwa awacin rea
onspeiħiciye hantans wicaśa ksa-
pa icaga okihi. Onkan oyatepi
kin ekta lecel yanke. Kośkala-
ka na inś wikośka eśa woonspe
ihunniyin na taku owasin eyin
na taku owasin kage eyaś wowa-
pi wakan etanhan takuni onspe
śni hantans tacanku kin okna wo-
ištece na wocante śica hena kici-
yanke kin he wanonyakapi iyece-
tu welo. Na heon eciyatanhan
Wakantanka isnala waśake kin
he awecakehan wicaonlapi ktelo.

From Bullhead, S. D.

I. S. C.

OWANCAYA WOTANIN.

PTE WAN WAYAHOTA HU
MAHEN ON.

Wojuwicašta wan Ole Hoven
eciypapi wan pte wicayuhe kin
owokape en onpi unkan yaptan-
yanpi qa wanji iyahdaskica qa
anpetu wakan yanni sanpa he-
hanyan mahen najin; ake taka-
tanhan yaaśdayapi hehan hdina-
pa, qa is isirtin ee śni, ees cepa.
Pte kin de toki iyaya kecinpi qa
wana ikiwikcekecepi hehan ake
unmanpi kin owicapeya on, he-
han amdeze kta unkan de ohna
e iyeyapi.

HOKUWA WICASTA
HOGAN OPAWINGE SAKPE
YUZA.

Munich wihni wawoyuspa wan
McIntosh ekta inarni kicopi. Wi-
cašta wan hogan ota kte okiya-
kapi, hecen he woope ohna śni
hecinhan sdonye kta on iwanyag
i; tuka hogan opawinge śakpe
kin owasinna cawicapa, qa oca-
pe kin owasin wanyaka hecen
woope ikicakse śni, hecen yuze
śni.

TATE TANKA WAN WAKI- UNNIYAN TANKA.

New Orleans, La. April 25 ta-
te tanka wan kinhde qa wicašta
opawinge zaptan wicakte, qa
kektopawinge ota kionni wicaye,
kionnipi kin ticocona wankapi,
woyuha kin mazaska woyawa
tanka wanji iyawapi hehanyan
wakiunniya. States śahdogan
en taku ota kionniyan.

WAIHANGYEKA TKA
TUWENA KTE SNI.

Sioux, Falls, April 24 ehan ta-
te iyumni wan iyaye qa mazaska
kektopawinge wikcemna nom
iyawapi hehanyan wakionniyan.
Tipi wikcemna nom sam nom
ihangya ešta tuwena kte śni.
Methodist Episcopal tipiwakan
wan ataya ihangya, canmdaska
wanjina kaeś en yanke śni,

CINCA SPANKIYAPI.

Colfax, Wash. April 24 ehan
Fred Burns cincapi wan natipa,
hecen wakśica mini itenya ohna
ehnakapi; mini kin sni ayā un-
kan mazaoceti akan ehdepi, peta
ota on kecinpi śni, qa heconpi
unkan ota on qa śiceca kin ceya
okihi śni heon śpan ešta inina
yanka qa ecen śpan qa ũa.

ISAN OYUKSE
WAN CAGU EKTA UN.

New York, April 24, Jacob L.
Hyland wanna waniyetu wikce-
mna nom sam iyeya isan oyukse
wan cagu ekta mahen on ešta ni
on. Qa is iye kin cagu śica wo-
yazan ececa kecin. St. Luke, s
wayazanka tipi kin en ũa, hecen
pejihuta wicašta onpi kin patapi
unkan cagu kin mahen isan oyuk-
kse wan on, qa he tokenken hen
on kin okarnigapi śni; tuka ho-
kśina cistina ehanna hececa iyu-
kcanpi.

CEKPAPI ANPETU WANJI
OKCIHANPI.

Springfield, Mass. April 24,
Mr. qa Mrs. Frank Sherman
Bonney cinca wica wan tonpi, qa
ihanran unkan ake wicinyanna
wan tonpi. Tohinni wanjina an-
petu kinukan wicayuhapi tuwena
sdonye śni.

Little White River

Rosebud, S. Dak.

Eyanpaha:

St. Mary's maka
owancaya yaonpi kin taku wanji
epa wacin kin heon micante on
nape ciyuzapi. Wowapi wakan
eciyatanhan wicoie wan weksu-
yin na heon epin kte. Tona can-
te mahel onśiħilapi kin marpiya
wokiconze kin he tawapi kta,
eyapi qon he weksuye. Bloke-
han Inyanconkaśke el omniciye
tanka qon hehan Bishop itokab
inawanji na hecel epe. Tona
wakan hignatonpi hecina to-
hanyan maka akan ni onqonpi
kin hehanyan wicaśa kin hena
wicongluonihanpi kta; hecel Wa-
kantanka iwahoonyanpi, na heon
etanhan lel oyanke kin tiwahe
ota atakuniśni. Na heon etan-
han Bishop itokab he ecewakiye.
Tokel onħanpi yunkan wocekiye
kin le inaonpiśkanyanpi kte
śni hecina he Bishop woope wanji
ecewakiya. Hececa yunkan wo-
cekiye kin le yuha imaonnipi kte;
St. Mary's maka owancaya ya-
onpi kin tonā yatke śni oyapapi
heci le anpetu kin cikisuyapi na
heon hepe. Blokehan omniciye
tanka on hehan tiwahe ataya ya-
kteśni el oonpapi. Yunkan lecel
awacanmin. Toke tona St. Ma-
ry's opapi hecin toke inśiya hece
ħci econpi ni ecanmin. Ho yun-
kan heon wocekiye kin imaonni-
pi kta kecanmin. Tona wowicala
onyuhapi hecina onkieincapi kin
Śinasapa owayawa qel on wica-
onkiyapi kte, he hecel wicoħan
kin lena on etanhan tokel okihi
ka Wakantanka ihukuya lila wo-
waśi econqonpi. Tohanni ħci le-
na heye śni waon tka. Lehant
micinca wan kakije na heon St.
Mary's maka owancaya yaonpi
kin miyekisuyapi ni ecanmiye.
Icin Wakantanka ecela wakayeja
eya tokelħcin makakije eśaś wo-
cekiye kin leon wacintanka mi-
ħiyin kta awacanmi.

Maka owancaya Śinasapa oya-
papi kin micante on nape ciyu-
zape. SOPHIE SITUPISKA.

WESTOVER, S. D.

Dec. 22, 1907 hehan Little
White River el St. Joseph omni-
ciye apikiyapi na lena itancanpi.

Justin White Feather tail itan-
can. Wanbliluta okihe.
Joe White Buffalo wowapi kaga.
Charging Elk mazaska awan'ka.

Arthur White Feather-tail woce kiye eya. Tall Mandan wiyokihe yuha. Leading White Cow tiyopa awanyaka. Alex Turning Hawk iapi awanyaka.

John Bluethunder Robert White Bear, Arthur Whitefeather-tail, Tall Mandan, Eddie Charging Elk, Sam Little Bird, ogliglepi.

ST. MARY'S OITANCANPI.

Sophie White Feathertail itancan. Emma Turninghawk okihe. Katie Chargingelk wowapi kaga. Emma Pejutowin mazaska awan. Jennie Tall Mandan wocekiye tawa. Gertie White Feathertail wiyokihe yuha. Lucy White Blanket wokagege awanyaka. Otolanwin iapi awanyaka.

Tajlutawin tiyopa awanyaka. Maggie Turnghawk omnicieye tanka wamnaye.

Ptesanoyatewin, Mary Canhanpila, Maggie Turninghawk, Annie White Feathertail, Lily Red eagle, Virginia Blueleg ogliglepi.

Tona St. Joseph okolakicieye oonpapi heci Wakantanka wicaonlapi heci wicakeya taku wanji awaoncinpi kta iyececa yelo. Heon etanhan miniwakan onyatkampi kte śni; na winyan tokeca awaoncinpi kte śni; kansu on kutepi kte śni.

Mitakolapi, tokel okihi oyate ob waon kinhan lila wicokuje ota, na iyotiyewakiye lo, heon tona Eyanpaha iyacupi kin wocekiye on miyeksuyupi wacin. Tona wowicala onyuhapi heci taku tona tiwahe iyusice on hena econ śni onkičonpi kta; tona wakan onkičiyuzapi hecinhan taku kin hena econ śni oničonpi kta.

St. Mary's okolakicieye maka owancaya yaonpi kin tona hingnayatonpi heci hena wicaša tokeca awacinpi śni po. Hehanl miniwakan yatkanpi śni po; kansu kutepi śni po; lena on tiwahe kin iniwaštepi śni; hena išta on wanblake heon hepe lo. Wokonze iyamni el Wakantanka taku econonšipi huwo? Wicoiye kin he weksuye, tonweni Wakantanka hecel ke śni ye lo; anpetu iyohila Wakantanka e onkičiyuzapi kte on hecel ke lo. Tiwahe wan bluha on hel winyan wan kici waon on he blaonihan śni tka taku tona tiwahe iyusice on hena wanjini econ śni. Yonkan toke winyan iyuha wicoran kin lena econpi śni ni ecamni. Ho hehanl bloketu July 12, 1908 omnicieye tanka kte kin heon Little White River el St. Joseph

na St. Mary's omnicieye on wamnayanpi; ptegleška śakpe, śunkakan nom, na \$53.00 na sack of sugar, na 7 boxes of crackers, 2 sacks of flour, hehanl wanblirupahu heca kin 32, winyan tawoyuha ota mnayanpi.

Tona yatkeśni oyapapi miyeksuyapi wacin; St. Joseph oyasinna wacemiyeciciyapi wacin. Wakantanka towašte un nape ciyuzape lo.

JUSTIN SITUPISKA.

OAK CREEK, S. D. 1908.

Aug. 12, 1907, Pejutowakuwa na Waonšilawin kiciyuzapi.

Sept. 8, 1907, Felix Wakan, Jordan kiciyuzapi.

Nov. 3, 1907 Walter Worpa na Wakiwin kiciyuzapi.

Dec. 10, 1907. Wakpala cinca kicitonpi, tawicu kin Marpiyatokecawin eciyapi. Dec. 25, '07 miniakašanpi, Mary Louisa eciyapi.

Jan. 26, '08, Makalutawin omnicieye opa, waniyetu 64 ye lo.

Koškalaka na wikoškalaka wankiciyuzapi kin omnicieye na anpetuwakan el śkanpo.

Oct. 6, 1907, omnicieya apikiyapi.

Jerome Kokamwošica itancan. John Śunkawašte okihe.

John Wakpamni wowapi kaga.

Louis Tašunkešica mazaska awanyaka. George Wahacankayapi wiyokihe yuha. Martin Pejutowakuwa iapi awanyaka.

Nick Cadotte tiyopa awanyaka.

Frank Wankičun wayazan awan.

Ignatius Marpiyaska wayazan awanyaka. John Cadotte wikli-

kla. Peter Herakahowaste, na Louis Śunka wakpamni.

Paul Hewanbli na Hugh Tatomani yewicašipi hecapi.

ST. MARY OKOLAKICIYE.

Waonšilawin itancan.

Ptesankinapewin okihe.

Susan Cadotte wowapi kaga.

Itepankeskawin mazaska awan.

Wakipiwin wiyokihe yuha.

H. Cadotte wokagege awanyaka.

Iyawašewin, Niyawakanwin,

wayazan awanyakapi.

Śinakagewin tiyopa awanyaka.

Ozanlutawin wakpamni.

Tašunkewašewin, Ptetokahe-

win wamnayanpi.

LOUIS CROSS.

Wicaša wan tiwahe yuhe qa cinca yuke kinhan otonweta i qa witko ku kta iyecece śni.

Christian Towiyute.

†

MAKA CANCAN WAN CAN-SUSBECA KAGAPI KIN KIYUKAN.

Jesus Wanikiya hecen eya:

"Wacinyanpi su cistina kin nakun hinskokeca duhapi ešta on he kin miniowanca en iyaye yašipi kinhan wacahnana ecen econ kta." De wowicake, wicašta wakanpi (saints) cansusbeca kagapi kin on wowapetokeca ota econpi. St. Jerome Church en woonspe yuhe kin he St. Hilarion toni kin etanhan on wounkiyakapi. Julian wicaštayatapi kin wocekiye etanhan tokan iyaye kin te kin ohakam wiyohinyanpata makoce kin owancaya maka cancan terika. Miniowanca kin ohuta kin apašbog u qa maka kin ataya ake minitan kte sececa. De wowapetokeca kin decen tanin qehan Greece makoce kin en otonwe cistina wan Epidauru eciyapi en wicašta yakonpi kin St. Hilarion ti kin ekta ceyaya ana tanpi qa onšiwicada qa owicakiye kta kidapi. Miniowanca huta kin en aipi. St. Hilarion wiyaka kin en cankpeška makahde inajin qa en ewacin rein cekiya, qa hehan miniowanca kin iwankam yamni akihde cansusbeca kaga. Wacahnana miniowanca oqo kin amdakena hinnda. Epidaurus oyate kin wowapetokeca kin de waniyetu ota ohakam kiksuyapi qa wopida eyapi ecee.— St. Jerome, Life of St. Hilarion.

WAICIYAPI.

WIYAKA OJUTONPI WAN.

Unkiyoranšice kin owa tanyan waonhdakapi kinhan tohinni tuwena aionyanpi kte śni, hecece kinhan waiciyesa kin heoncapi kte śni. St. Prior Nitria en išnana inakoskan ti kin iye kin teriya ičicuwa, tuka tokan kin ekta wacantkiyapi awicayuha. Anpetu wan en makoskan tipi (Hermits) mniciyapi qa wicoran wašte iwohdaknpi. Onkan monk wanjigji en opapi śni kin taku ičišniyan econpi keya cajewicayata yukan. St. Prior tokaqeš inina yanka tuka, hecetuwanjica wacantkiyapi kin kiunniyan yuke kin hehan tankan iyaya qa wojuha wan wiyaka ojuna ohnaka qa

qin. Nakun canyankapi cistina wan icu qa wiyaka tonana ohnaka. Hecen wiyaka ojutonpi kin he qin qa unman kin he ikce yuhe qa ake timahen icicawin ki. Tokenken taku token hecinhan owasin iwangapi. "Eya wojuha ohna on kin de woartani qa woopewapica śni ecamon qa kiwawakse kin ee, tuka wanwehda-ke kte śni e on reyatanhan wecin qa canyankapi wiyaka ohna tonana on kin de tokan taku śica econpi kin ee, ohinni mdašice kta on mitokam taninyan yuha waon ce, eya. Woartani mitawa kin eeš on cante šidmičieye kta on mitokam wahduhe, qa amiciktonjapi kta Wakantanka wakida qa tokan taku ičišniyan econpi kin ee en ewatonwe śni wašteka?" Decen eye kin on unmanpi kin owasin hecetu qa wowicake, qa ecen econpi kinhan eceena wiconi iyahdepi kta keyapi qa waiciya yuke qon ayašanpi.

WICAŠTA NI WAN ĤAPI.

Itonpišni on Wakantanka maka akan onpi econhan iyopewicaya ecee kin, wanji iyotanka obdake kta. St. James Mesopotania en Bishop heca Nisibe en Bishop heca Fourth Century econhan nion qehan anpetu wan otonwe tokcata ya wanka. Wicašta onšikapi qeya en hipi qa wanji ĥapi tuka mazaska on ĥapi kta yuhapi śni hecen mazaska on ĥapi kta kidapi, wanjina te śni tuka heyapi. Bishop iyuškinyan token kidapi kin ecen ecawicakicon; nakunšta keyapi kin cekiciciya; qa wartani kin Wakantanka akieiktonje kta, qa wicayawaštepi kin en opeye kta kida. Wicoie dena eye kin ecahankeya te konze qon ĥa, hecen mazaska on ĥapi kte kin Bishop wicaqu. Wanna isam iyaye kin hehan woištenya itonpi śni qon te konza wanke qon najin šipi. Tuka nawicaron śni, qa te kons wanke qon ecaca ĥa wanyakapi hehan St. James etapapi qa isiha kin en cankpeška makahde erpeičiyapi qa wartanipi kin ohdakapi, qa onšikapi qa mazaska kin he cinpi on wohneye kin he econpi ohdakapi. Hecen awicakiektonje kta, qa te kin ake kiniye kta kidapi.

Wicašta wašte kin Wanikiya ohan ope walĥayena awicaton-

wan, qa taku kidapi kin wicaqu, qa ake wowapetokeca econ qa wohnyaye on Wakantanka woiyopewe qon qa te qon ake cekiciciye qa ake kiniyan.

Kyle, S. D.
Potatoe Creek,

Eyanpaha:—

St. Joseph okolakiciye wan icage, kośkalaka lena oitancanpi: Albert Red Horn itancan. Ignatius White Plume okihe. Frank Horn Cloud secre. Howard Long Bear treasurer. George Blue Leg critic. Albert Red Horn wacekiya. Francis Afraid of left hand tiyopa awan. Chas White Plume, Peter Bald Eagle Bear. St. Joseph ataya wicakicaśa kin Frank Horn cloud.

St. Mary's kin Mary Red horn itancan. Esther Bald eagle bear okihe. Nellie Long bear Secre. Annie Man above treas. Agnes White Plume critic. Josephine Bald eagle bear wacekiya. Ella Twist tiyopa awanyaka. Josephine Bald Eagle Bear, Jennie Spotted Horse wigliglapi. Lucy Twist wokagege awanyaka.

Kośka lena Yatke śni Okolakiciye opapi. Heon ceonkiyapi cana wicunkiksuyapi kta iyececa; A. Red Horn, John Spotted horse, Henry Twist, Jos. Thunder Bull, Peter Bald eagle bear. Feb. 13, '08 ehan iciconzapi.

Miniawicakaśtanpi kin:

Ignatius S. White Plume age 48, Agnes " " " Mrs. Sitting Eagle Harry Twist

Nitakolapi.
FRANK HORN CLOUD.

Matowakpa Oinkpa,
Allen, S. D.

Eyanpaha:

St. Joseph St. Mary yaonpi kin lehanl taku oterika wan awakipa, hokśila wan lila wašte ecela unyuhapi, yunkan Jan. 26, '08 mazaśkanśkan oape wikcemna ehanl te, Joseph Fast Wolf eciyapi, waniyetu yamni. Mayuśinyaye kin iconhan Wakantanka weksuye nakun St. Joseph na St. Mary tinskoya yaonpi qon hena cikisuyapi. Icin micinkśi wicoran wašte kin okna makite kin heon. Iho mitakuyepi, lecel waawacanmi, wicoran wašte wan okna micinkśi makite

kin le okna miś eya tokata okna mañin kta ecanmi, na anpetu iyohi wocekiye okna homawakan helo. Ho mitakuyepi, lece rci wotehi wan mahiyakle kin icunhan taku lila wašte wanblake na on etanhan le anpetu kin micante kin tanka selececa tiyośpaye wan ob waon kin tipi wan el winyan mitawa kici amakipi na tokel okihi woyute waštešte yul unkiyapi na hayapi waštešte ongunkiyapi na wicaśa yamni waho-kononkiyapi na ataya nape unyuzapi. Ho yunkan mitakuyepi lila wicoran kin le wašte ca ecamiconpi kin on etanhan waklaotanin. Ho yunkan mitakuyepi, okolakiciye onkitawapi el kiciknapi wicoran kin le sutaya kluha naonjinpi kte iyececa. Ho mitakuyepi, St. Joseph yaonpi qun sutaya kici yus najin wacino, anpetu wanji el śna wicaśa otoiyohi woakipa unyuhapelo, unśikicilapo, hececa kin un sanpa tanka ayin kte lo. St. Joseph okolakiciye kin tanyan yin kta heci he onkokičilepi kta.

Mato Wakpa oinkpa qel June 2, '07 St. Joseph okolakiciye wan Rev. Father Henry, S. J, unki-cicagapi.

John Six Feather itancan. John Apple okihe. Philip Fast Wolf wowapi kaga. Paul Yellow-hair mazaska awan. Plenty Bear iapi awanyaka. Standing First tiyopa awanyaka. John Short Bear, Charles Apple okliklepi.

Ho mitakuyepi, owasin nape ciyuzapelo.

PHILIP FAST WOLF.

Standing Rock N. D.
Dec. 21 '07.

Mitakodapi owancaya yaonpi kin wicoran wanji nina rcin en awiyucanpo. North Dakota qa S. Dakota nonpin mazaska awanyaka wanjina qeya onyuhapi qun he kohanna mazaska icagin kta onkiknapi kte do; hecece kinhan kohanna St. Joseph Okodakiciye kin icage kte do. Hekta July 8, 1906 qun heehan N. Dak. imahen mazaska awanyaka wanjina yuśtanpi qon. Iho hee onkan Dec. 15, 1907, en ikdaotai qa \$313.80 yanka keya; heon takeha huwo? St. Joseph okodakiciyepi! Miniśośepi! Wan Crow Hill, Fort Totten etanhan qa onman karmi etanhanpi ohinni mazaska en ehnakapi, abdezapo! Hena ptewa-

niyanpi nicape do; qa ūnkakan nicape do, qa hena isanyatipe do. Wiyorpeyata St. Joseph okodakiciye kin ituya winitantanpe do. Wan qeya ekta etunwan po! Qa mazaska wikcemna 2 iś 3 ekta qeya wacibiye koda, hecen koyana ota kinhan oyate tokeca ekta wotanin wašte ayapi kte do. Ripa ekta wana wicatakuni śni nawaron we do. He he he! he he he! Eyanpaha kin dawapi ca tanyan abdeza biye yo. He he he!!! Taku on hepe do, dee ye do. Veblen South Dak. etanhan Mr. Narcis J. Demarrias wowapi wan maqu heon nina icante maśica qa heon. Wakantanka tunkin maka akan oonkiyapini ecanmi heon Eyanpaha kin yaotanin okawinrye kte do. Hopo ito tohan omniciye tanka cana womnyaye etahan \$50.00 ecee en eonknakapi qa heon wancak ataya okawinr wamna onyanpi kte do; qa wanna wawokiya mazaska awanyaka nina kikta po! kiktapo! he he he! Qa niś dena on takeyabiye koda.

Qa hehan Miniwakan Yatke śni okodakiciye eciyatanhan toketu hwo? Nakun he Eyanpaha en cajeyate do. Ho ito miś decen epin kte do: Wana ito St. Joseph Okodakiciye tona etanhan Bishop itokam inajinpi qun ikduwitayapi qa nina iyopte qa he ohinni Eyanpaha en wowapi yeyayapi kta qa heciyatanhan nakun womnyaye wan kagapi qa hanke on mazaska awanyaka wanjina en ye qa hanke on waśicu omniciye ekta yapi kta; hecece cinhan wotanin wašte ayapi kin nakun Miniwakan Yatke śni okodakiciye kin he kici inyanke cinhan wašte kte do. Wan miyeqe conana wicakarnigapi qun hen opawacami tka ye do. Qa Eyanpaha kin mazaska wina egeś wata taninśni ce yekiyapo. Mitakodapi owasin nape ciyuzape do.

THOMAS F. WHITE BEAR.

Bull Head, S. D.
March, 1908.

Eyanpaha:

Kola taku wanji cicila kte lo. St. Joseph tawoopepi kin tonakeca heci iyuha wacin ye lo, wicaśawakan itancan woope kage kin hena iyuha wake lo. Śunkska paha okiksahe omniciye etanhan woope wacin ye lo

MAURUS TATANKAONJINCA.

BULLHEAD, S. D.

Eyanpaha kin:

St. Joseph na St. Mary okaśpe tona yaonpi kin taku wanji on hiyaklepica nayanronpi kte. March 21, hehan oyate kin taku inihinciyapi na wicaśa nomp tunkanśilayapi ta yapi kta ca wicakarnigapi yunkan mazaska kin oyate kin na oicikpaninpi ca, okolakiciye mazaska owicakilotapi tka ake na oicikpanipi, canke cancega wan icupi na lowanpi, yunkan oape śaklogan hetanhan na wanji kin hehanyan yunkan ataya \$540.00 hehanyan eknakapi Yunkan hecanmiyelo. Mitakolapi, wocekiye wan el Jesus caje kin olowan qeya el ikoyaka ca onkahiyapi can wowaśake kta keonkeyapi yunkan lehanl cancega wan on wicacaje yaonihanpi canna taku woyuha wan mahetuyerci kinknakapi qeaś cancega wan on yuwankal icukiyapi yunkan iwaba na hepelo. Ehanqon le okna oyate kin iyuha wocekiye opapi wan yanke lo epe lo. Omniciyapi canna cancega wanji iwacu na el yuha mankin na kohan wakabu heci oyate kin el iyuśkinyan wocekiye el au kte lo, ecanmi yelo. Kola-pila, tokiyap mazaśa olowan qeya u welo, eyapi yonkan wanna Inyanconkaśke el hanhepi wanjila tanin hinkle yunkan winyan ko sa selececa yelo. Yonkan lecanmiyelo. Lakota wicohan kin onyan wahiyo yunkan hetanhan winyan wan kici owanjila wocekiye okna kici manke lo. Canke wocekiye kin wowacin tanka keyapi kin wowicake kepa wowa-klake sa yelo. Nitakolapi miye.
MAURUS TATANKAONJINCA.

Three Mile Creek,
Kyle S. D.

Eyanpaha:

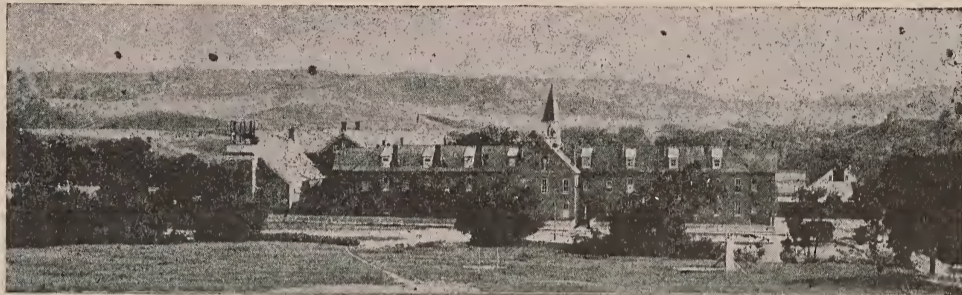
Hekta March 15, '08 hehan omniciye wan teca onkagapi. St. Joseph na St. Mary oyasin nape onniyuzapelo.

Ambrose Hernandez. itancan. Louis White Bonnette okihe. M. Galligo mazaska awanyanka. F. J. Beyannis wowapi kaga. Geo. Pawnee Leggings iapi awanyaka, na wacekiya. St. Joseph omniciye ataya wayazan awanpi. Red Cayote wiyokihe yuha. Pawnee Leggings tiyopa awan. Raymond Hernandez, Albert Eagle Horn, Thomas Goodbear Eagle Horn, Valentine Hernandez; Timothy Galligo, Chas Henry, wigliglapi.

Tona le wanlakapi kin wocekiye on onyekisuyapi kta iceonniciyapi. F. J. Beyannis.

SUPPLEMENT TO THE 'EYANPAHA.'

MAY, 15, 1908.



HOLY ROSARY MISSION PINE RIDGE, SOUTH DAKOTA.

Moreau River.
March, 10, 1908.

Dear Readers of The Eyanpaha;

Last November we elected new officers. Mary Landrie itancan. Hellen Sand, okihe. Nellie Ducheneaux wowapi kaga. Sophie Ducheneaux mazasa awa. Rosalie Hodgkiss wapaha yuha. Julia Arpan lowan itancan. Zuwi LeBeau wokagege awanyaka. A. Arpan, Mary Benoist Isabel Iron horse, wayazan awanyakapi Mary Hodgkiss, Annie Yellow horse wamnayanpi. A. Ducheneau, Louisa Cummings, wapanipi. Lillie Ducheneau, Mary Whitney, Carrie LeBeau wigliglapi. Mary Black Pine, tiyopa awanyaka.

From Oct. 1906 till Nov. 1907. Mrs. Mary Whitney was our wokagege awanyaka and she made over one hundred dollars for us. We spent the money in helping the sick, for our church and we gave our priest \$5.00 during that year. We have a church now and we are all glad of it. It was built last fall a year ago. Lately we collected \$30.00 for a bell. Asking you to remember us in your prayers and we will do the same.

NELLIE DUCHENEAUX.

Ironwood Creek, Rosebud, S. D.

Mitakuyepi, lehanl tokel on skanpi kin he nayaranpi wacin. Yunkan Wakantanka taku tona iwahounyanpi na econ onsiipi kin hena onyuhapi na okna naonjinpi kte rcin, na iyotiyekiye onspe-

onkiciciyapi na hena awacin onspeonkiçiciyapi. Lena onspeonkiçiciyapi wašte. Wokonze tokahe el taku econ onsiipi kin he Wakantanka hecela ohounlapi kte, anaungoptonpi kte lecel ka. Wakantanka onnagipi na ontancanpi kin on ohounlapi, onnagipi on wicaonlapi kte lecel ka. Wowastelake na wowicala na wanaronpi kte na wicaşa iyuha ikluhukuya onpi kte na ontancanpi on wicaonlapi kte lecel ka. He hinhanni na rtayetu oyasin Wakantanka ceonkiyapi kte na anpetuwakan kin iyokipiye ce-kiye onyanpi kte kin Wakantanka ohounlapi kte, lecel awaoncinpi wašte. Wowapi wakan el tokel onyanpi kin tanyan onyanpi kte kin he onkokiyakapi na tokel onyanpi kin sicaya onyanpi kte cin he onkokiyakapi. Ho he awacinpi waste.

St. Mary Okolakiciye Itancanpi.

Mary Spotted Horse. Mary Attack Him iyokihe. Bell Two Eagle wocekiye eya. Lucy Owns the Battle mazaska awanyaka. Mable Sharp-fish wokagege awanyaka. Cora Bearcat tiyopa awanyaka. Mary Arm wamnaye Edith Arm wowapi kaga. Annie Fast Bull, Lena End, Lucy Two Teeth, Alice Picket Pin, Rose Blackbear na Jane Picket Pin okliklepi.

Cante wašteya nape ciyuzape.
EDITH ARM.

Standing Rock, N. D.
Mar. 24, 1908.

Mitakodapi Hunkpati tipi qe koška wan wašte onkan Mar. 19,

te do; anpetu num wayazinke. Ed. Heraka eciyape do. Onkan koška wašte qeyas wocekiye opa šni, unkan Hunkpati oyate kin wocekiye onyuonihanpi qa canoknake wašte opekeatonpi mazaska 45 iyopekiyapi. Thinhanna qe, oyate kin ataya wicarapi makoce qe yuonihan ayapi hece mitakodapi tona wotanin wandakapi kinhan wocekiye on kiksuyamiye. Koška kin de wašte unkan wocekiye opa šni canke wicarapi makoce kin tukte ayapi kta tanin šni: ho hece ito mitakodapi tona wocekiye oyapapi šni hena idukeanpi qa miniawicakaštanpi wicoran duhapi iyece-
tu wadake do. Nitakodapi.

CHARLES O'AAKDI.

Cannon Ball, N. D.
April 2, 1908.

Eyanpaha:

Mar. 24, 1908, ed Ikinicapi ta; Otaapapi qa Oyemazawin cincapi.

Mar. 30, '08 ed Itancanwicaqu ta, Wicanrpitanka qa Upiwin cunwintkupi.

Ho eya mitakodapi Cannon Ball, ed anpetu iyohi wicaşa qa winyan cante sicapi qa oyate kin waşikda oyatepi sececa unkan de tona Eyanpaha iyacupi kin hena awicakehan wocekiye okna onyeksuypapi wacin ye do. Eya wana okodakiciye tona sinasapapi kin hena owasin tanyan wocekiye ohna yaškanpi kta iyecetu ye do. Ho henana, tona Eyanpaha iyacupi owasin nape ciyuzapi ye do,
VALENTINE STRUCK MANY.

Fort Yates, N. Dak.

Eyanpaha:

Taku wanji wakdaotanin wacin. Hekta Nov. 25, '06 ina wayazan qa Feb. 16, 1907 en ta qa he hanhepi kin omniciye tipi en yanke qa Feb. 17 en liapi. Ina te qa dina oiyokišica tka ake waditaka weçon wamakaheja tka ina oiye ota weksuya qa heon ina wayazanka hehantanhan ohinni Wakantanka oiye qa tohan qeya on onkiçiconzapi qon ohinni kiksuya, kici manke qa ohinni kici wocekiye epa, qa ake šni kici wadowan. Ina tohantanhan omniciye omniciye opa kin token okihi wocekiye qa dowanpi waštedake qa wanji iyotan waštedake, he ohinni ahiyayesa. Ina tin kta ikiyena en ate heciya: Tohan mate cinhan odowan wan wašewada qon he ayahiyayapi qa wacekiyapi, qa cantenišicapi qeyas hecetu; odowan 16 he ina tin kte cin en ahake hecin ahiyaya. Ho heon ina taku eye tin weksuya qa waditaka weçon; hinhana wihiyaye šakpe en ta. istammihanpi mahiyu tka, ate heya: Nihun wanna ta ce, cunš, eye, ca nape en yuze, wacekiye ayaštan, hehan ina en inawajin qa hepa, ina, ina, yeksuya he? epa tka amayupte šni. Hehan wanna ina woniya tawa kin he taku wančan ikikcu kecanmi qa on cantemašica tka ake hecetu wada. Icin iye taku wanka kin wiconi qa wiconte en itancan kin he on token onliapi onkokihipi šni. Tohan tuwa anpetu tawa kin iyehan kin can anaptapica šni. Ho ina te cin en odowan wan wašteda qon he ahiyayapi qa wacekiyapi. Ate, ina kici dina

wocekiye waštedakapi, onkan dehan onma wabiyena ŋa; onkan icantemawašte qa on ina ŋe cin hehantanhnan wocekiye kin awektonŋe ŋni. Ina dina tanyan ŋa e oun wašte ekta on sece ecanmiye.

Mitakuyepi, wocekiye kin ohinni kiksuyapi, ina maciqana hehantanhnan ohinni temabila qa on wocekiye en dina ahtani, onkan miš imacage cin en micinca hokšina nonpapi onkan miš heon token okihi wocekiye en bdiheciya; onkan nunpin makiŋapi, onkan dehan hena nunpin kunšitku kici makoce wankan wašte kin en kiyotankapi qa maka wowiyuškini kin ayušanpi qa maka wiconŋe en kin yunkapi kecanmiye. Dehan ina Mrs. Pierre onyan imayaya onkan dina otehike, wikoškepi qa koškapi niyate, nihun wicakduonihanpi hecen tehan yanipi kte. Hehan eya ina micinca nonpapi tonwin Mekanajinmaniwin, dena tom Iyasan, ate wahowicakiya qa wanna wicalahapi en yunkan he nakon dina cantemawašte.

Sept. 15, 1907 en ake wicincana wanji wašte bduha qa Sept. 29, en miniakaštanpi. Clara La Fromboise eciyapi.

Owasin cantewasteŋa nape ciyuzape. Lucy P. Lafrom Boise.

MINIAWICAKASTANPI.

Fort Totten.

April 18, Ernest, miniakaštanpi, Macrh 5 ehan tonpi. Gabriel Gourd qa Helen Blue Shield cincapi.

April. 18, John Wanyagmani, miniakaštanpi, waniyetu wikcenašakpe sam topa.

April 19, Benjamin miniakaštanpi; wi wanji, Joseph Albert qa Elizabeth Cankuwayakapiwin cincapi.

April 25, Jerome miniakaštanpi, March, 21, ehan tonpi, Sam qa Martha Wakakšan cincapi.

April 29, Frank Michael miniakaštanpi. April 6, ehan tonpi; Louis Belgard qa Celina Cadotte cincapi.

WAKANKICIYUZAPI.

April 19, 1908, Maurice Hupahuskana qa Miss Mary Anpetu maniwin kiciyuzapi.

April 24, '08 Smiley Smith qa Elizabeth Winona kiciyuzapi.

WICAŋA.

April, 24, '08 heehan Edmund Wanbdioyate ŋa. Waniyetu wikcemna nom sam zaptan. John Tatankapa cinca.

Manderson, S. D.
Battle Field.

Eyanpaha:

Hekta Nov. 16, 1907 ehan Battle field el okolaki ciye wan icage na lena oitancape lo: Alex Two two itancan. Henry Little Bear okihe. Joseph Two two secretary. James Little moon treas. Ben Red Bear chairman. Joseph Eagle Bear, tiyopa awa. Ben Women dress, Ben Erwing wigliglapi.

Hehanl St. Mary etanhan lena itancanpe lo: Jennie Two two itancan Cecilia Spotted Bear Kattie Little moon secre. Emma Litte Moon treas. Frances Bear S. wokagege awanyaka.

Mitakuyepi ake tokeša onaonyaronpi kte lo. Ho St. Joseph na St. Mary yaonpi kin onyekuyepi kte lo, owasin nape ciyuzape lo.

JOSEPH TWO TWO.

PINE RIDGE,

Porcupine S. D.

Eyanpaha:

Mitakola St. Joseph yaunpi qon onnamayaronpi kte wacin. St. Joseph na St. Mary wanji woterika onkakiyapi kin iyuha iyecel cante onšicapi kte onkeyapi qon lehanl taku woterika wanji slolwaye, micinca ota na wanji iyotan tewarila qon lehan makiŋe na micinca ob woterike awakipa, econhan wicoiye wanji wowapi wakan el weksuye na ake mitawacin kin tanka selececa. Woekicetu na wiconi kin he miye, tuwa wicamala kinhan, ŋa eša he ni kta. Tona nionpi na wicamalapi kinhan owihanke waniŋi tapi kte ŋni. Mitakolapi, onkitakupi nionpi el le tewiconrilapi kte ŋni, tapi nakun isanpa ohinniyan wiconksuyapi kta iyececa; wocekiye kin he on wiconksuyapi kta. Anpetu na hanhepi iyohi wicanagi cewiconkiciyapi kta. Ecin tuweni Wakantanka ti kin katinyeya tima iyaya okihi ŋni kin on maka kin akanl onqonpi kin le econhan woartani

on kakišonkiciyapi ŋni kinhan wiconi onma el Purgatory oyanke el onyanpi kta. Hel Wakantanka onnagipi kin yuska kta, kakišonyanpi na lehanl marpiya el onkipi kta. Wicaŋe cin cewiconkiciyapi kinahan wokakiŋe tapi kin yuptecala kta, "Machabeus" tawowapi kin el hecel wanonyakapi. Wicaŋa wacewicakiciyapi kin he woawacin wakan na wašte." Ho mitakuyepi, St. Joseph na St. Mary yaonpi kin tapi canna el ecela wicaksuyapi ŋni wo, maka akanl tohanyan ni onqonpi han wocekiye on wiconksuyapi kin wašte. Mass wošnapicawicakiconpi kin he wocekiye iyotan wašte. Ho koškakalaka wašewacinyepica makiŋe, James F. Mousseau, waniyetu 18; Holy Rosary Mission el waniyetu zaptan wayawa na tiyata kli na New York City heciya i na ekta Oct. 6, 1907 hehan, ŋa; Wicowayazan terika wanji ececa yamnican le wayazan na ŋa hecel tancan kin Porcupine el Oct. 12, hehanl ahipi na Oct. 14, 1907 St. Paul tipiwakan owicala el hapi. Rev. Father Westropp, wicaša wakan onkitawapi ha, St. Joseph na St. Mary wocekiye nitawapi el micinkši yeksuyapi wacin. St. Joseph tona koškakalaka waštešte wicayakinunipi qon hena iyuha kolaciyapi, na micante on nape ciyuzapi. Oglala oyanke el ŋinasapa okašpe tonakiya onqonpi Christmas wocon wanjigji wašte econqonpi. Porcupine el St. Paul church St. Jos. na St. Mary okašpe wanji onpi kin Wakantanka eciyatanhan Christmas wocon wašte kagapi econhan koškakalaka wašte wanji Christmas on mazaska \$15.00 na taspan koka wanji na woyute \$7.00 kipiya hecel ataya \$22.00 Christmas onyuhapi. Louis Mousseau X. Mousseau he e Wakantanka eciyatanhan koškakalaka wanji wocekiye wašte kage na he lila piwala, tona wookiye kagapi kin he na wicayawaštepi nunwe eyapi qon he weksuye. Ho mitakolapi tokata congress Rosebud, S. D. el econpi kte kin heciya awacin manipo, na ikluwiyeya na wakthan onpo, ecin itancan onkitawapi anpetu wan tohan ukte cin tuweni slolye ŋni kin on ninagipi kin ohinniyan woqupo ecin anpetu wanji el lila tehanl ecimaniye kta kin on wipiya on kin hecel wiyuškinyan atkuku kici woklakin kta okihi. Ho St. Joseph na

St. Mary owancaya yaonpi kin micante on nape ciyuzape lo.

ALEX MOUSSEAU.

Cherry Creek, S. D.

Eyanpaha:

St. Joseph na

St. Mary taku epin kte cin lena nayaranpi kin le tuwe hwo ecannipi kta wacin kin he wanji yelo. Eyanpaha kin el tuwe taku oya ke na inš owacekiya on taku karnigin na eye kin, taku wicala keya naonronpi kin lena hecetu kecanmi ye lo. Tuwa hecel toie kin tokata omaka ota wowicala tawa kin kloayin kta: Kolapi oyate okašpe ecekcen ŋinasapa okašpe hiyeye cin oycin toktoye wicotawacin icaraye selececa. Hecanmi on Eyanpaha kin naron inawarni ye lo. Tuwa. wicala wan iye tancan el sloliŋiya keya canna iyomakipi ye lo. Icin Eyanpaha onkagapi kin tuwa taku wanji okarniga ca heon wotanin kaga okiwa karnige lo Tka wicacante na wicotancan el hena on ŋni selececa. Ito kolapi owacekiye nitawapi el taku wanjigji wapetokecatonpi ye to. Hecce kinahan taku wanjigji toktokecase onkablezapi kta. Canpawakpa el ŋinasapa okolakiciye onpi kin tanyercin owicawakarnige kin heon hepe lo. Iwašte kla rci ŋni aye lo; heon inihimiciye seleyeca wicaša tona wakišakiŋon unškanpi, tokeške onranpi kta huwo ecanmi. Citizen wicoran el onkipi kinhan lena onkayušanpi kte seca keyapi nahanreinke ŋni ayušan ayape lo epe. rce. St. M. opa wan Tatewin waniyetu 98 hanpa šipto kšu na wiyakapana ko kage wana mani ŋni qeyaš lena tanyan okihi owinja paškiška ko kage.

Canpa wakpa okolakiciye onqonpi kin ataya unyanpi unkohipi ŋni selececa ye lo. St Joseph na St. Mary micante on nape ciyuzape lo.

PETER HOLY BULL.

May 2, 1908, Yatke ŋni Okodakiciye St. Michael's Mission en rta. yetu mniciyapi, qa Ignatius Court qa Michael Wasuicasna. mani, kici St. Paul, Minn. ekta June 15, 16, Yatkešni Omniciye tanka kte kin ekta yapi kta wicakarnigapi.

Ft. Totten, May 3, Hehanskaska, Nawinšmani, Henry Cetanskaska, Peter Adams, Tatekawiya kpwawin, Yatke ŋni woŋconze icupi.